

# PROFICIENCY PROGRAMME

Course Information Booklet

# PROFICIENCY PROGRAMME

## Membership Options

		3 months   12 weeks	11 months   44 weeks	Time Commitment	Membership
<b>Core Membership</b>	<b>Proficiency Lab + Conversation Class</b> Wk1 Skill Builder Wk2 Proficiency Class LIVE on Zoom Wk3 Study Pack Wk4 Conversation Class LIVE on Zoom	€120	€396 ( <del>€440</del> save 10%)	Per month: <ul style="list-style-type: none"> <li>1 - 1.5 hr self-study</li> <li>2 hr live lessons</li> </ul>	<ul style="list-style-type: none"> <li>Yes. recurring payment</li> <li>Cancel anytime - see Terms</li> </ul> Included in all memberships, each month you get: <ul style="list-style-type: none"> <li>Skill builder</li> <li>Proficiency Class Live</li> <li>Study pack</li> <li>Personalised feedback and corrections on written work</li> <li>Virtual classroom recordings*</li> <li>Access to the proficiency class library</li> <li>Member discounts on Book Lab course and on-demand courses</li> </ul>
<b>Extra Membership</b>	<b>Proficiency Lab + x2 Conversation Classes</b> Wk1 Conversation Class LIVE on Zoom + Skill Builder Wk2 Proficiency Class LIVE on Zoom Wk3 Study Pack Wk4 Conversation Class LIVE on Zoom	€165	€514 ( <del>€605</del> save 15%)	Per month: <ul style="list-style-type: none"> <li>1 - 2 hr self-study</li> <li>3 hr live lessons</li> </ul>	
	<b>Proficiency Lab + Conversation Class + Grammar Lab</b> Wk1 Skill Builder Wk2 Proficiency Class LIVE on Zoom Wk3 Grammar Lab LIVE + Study Pack Wk4 Conversation Class LIVE on Zoom				
<b>Mastery Membership</b>	<b>Proficiency Lab + x2 Conversation Classes + Grammar Lab</b> Wk1 Wk1 Conversation Class LIVE on Zoom + Skill Builder Wk2 Proficiency Class LIVE on Zoom Wk3 Grammar Lab LIVE + Study Pack Wk4 Conversation Class LIVE on Zoom	€198 ( <del>€210</del> save 5%)	€616 ( <del>€770</del> save 20%)	Per month: <ul style="list-style-type: none"> <li>1 - 2 hr self-study</li> <li>4 hr live lessons</li> </ul>	*Please note that conversation classes will not be recorded.  There are no lessons in August



## Skill Builder

Each month explore topics like **global current events, culture, and entertainment** through podcasts, articles, TED Talks and videos.

### How will this help you?

These carefully curated tasks are designed to **immerse** you in authentic English and **strengthen** your listening and reading skills.



## Proficiency Class

Engage in **meaningful conversations** with other advanced speakers and **expand** your **vocabulary** with **sophisticated** expressions to achieve proficiency.

### What will we do in this class?

- Analyse the material in-depth, exploring its **vocabulary** and themes
- Break down the **nuances** of language use
- Engage in dynamic discussions to challenge critical thinking skills and improve your speaking **confidence**



## Study Pack

After the session, the learning continues with the Study Pack.

### How will this help you?

The study pack will help you consolidate all the vocabulary you have just learned. You will **activate** this new vocabulary with the quizzes, writing tasks, and vocabulary exercises.

### Let's not forget about writing!

Writing is a great way to practise and improve your English, and it's also perfect for recycling and using newly attained vocabulary.

## Feedback

Say goodbye to wondering if you're "getting it right." The personalised feedback from Kerin will help you identify areas for **improvement, build** your vocabulary, and **refine** your expression.



**REFINE,  
ELEVATE  
& SPEAK WITH  
CONFIDENCE**



### Conversation Class

The advanced English conversation class gives you the opportunity for **speaking practise** through **structured** classes and **thought-provoking** topics designed to:

- Boost your ability to express yourself on sophisticated topics.
- Improve your fluency, pronunciation, and overall communication skills.
- Expand your vocabulary in meaningful, practical ways.

Every lesson brings a new focus, and with Kerin's guidance, you'll feel confident and capable in any conversation.



### Grammar Lab

Add in a Grammar Lab once a month! This **workshop-style** class is far from traditional grammar drills. Instead, you'll:

- Review and refine your grammar through group discussions, problem-solving activities, and dynamic practice.
- Identify common mistakes and learn to fix them in a supportive, interactive environment.
- Tighten up your grammar use, ensuring accuracy and clarity in everything you say or write.

Join this class live or watch on-demand

## CONTINUOUS IMPROVEMENT



### Break Through the Learning Plateau

Say goodbye to stagnation—our programme challenges you with fresh, engaging materials and tasks to ensure continuous growth and progress.

### Connect with like-minded people

Join a community of passionate, advanced English learners who share your drive to improve, explore, and actively use English in meaningful ways.

### Build a sophisticated vocabulary

Enrich your vocabulary to express yourself clearly and confidently, especially in formal or professional settings.

### Improve your understanding of native speakers

Go beyond just understanding the gist—explore nuances and language choices of native speakers to sharpen your comprehension skills.

### Refine and Elevate Your Communication

Enhance your communication skills to become more dynamic, natural, and confident in every interaction.

### Get valuable feedback

Receive personalised, constructive feedback on your spoken English, helping you identify and refine areas for improvement with confidence.



To make sure you get the best experience,  
it's essential to join the group that best matches your level.

1

**Fill in the enrolment form**

Simply fill out the short application form [click here](#).

2

**Have a call with Kerin**

Kerin will be in touch soon to schedule a quick call.

This is a chance to assess your speaking level and find the ideal group experience for you.

3

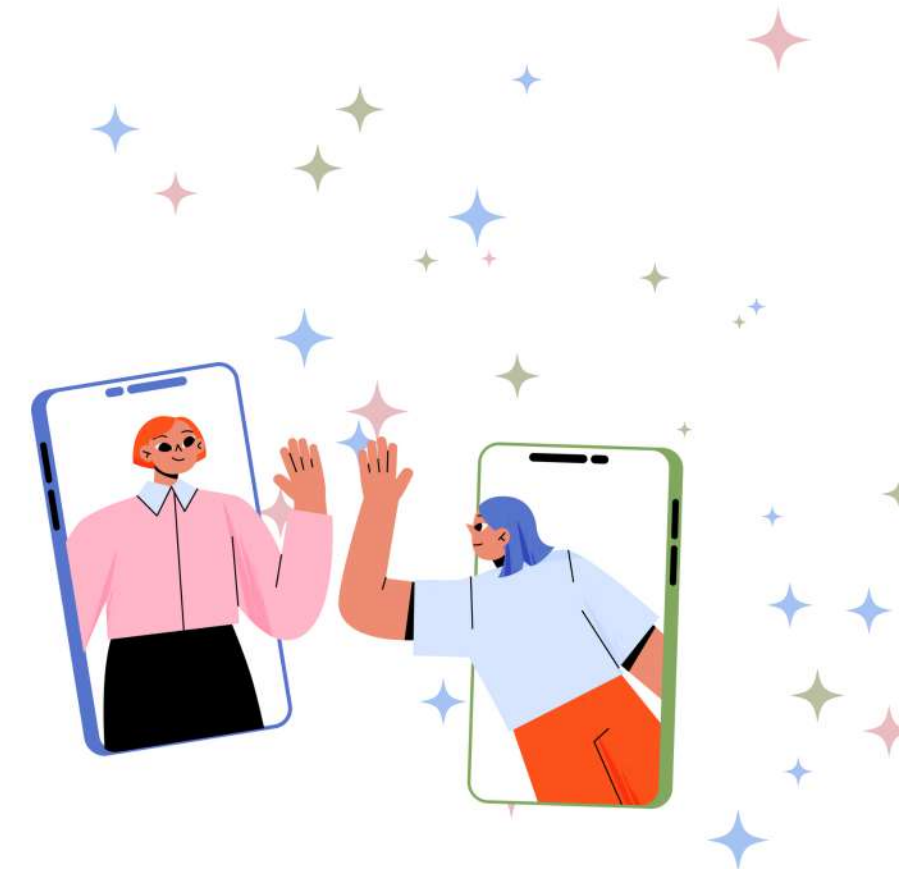
**Get started!**

Once your group is confirmed and you make payment, you'll gain access to the Skill Builder and our library of past classes.

You can start at the beginning of any month (except August), depending on availability.  
We'll do everything we can to find the perfect spot for you!

And don't worry—your membership is flexible, and you can cancel anytime.

**[JOIN NOW](#)**



## EDA GROUP CLASSES SCHEDULE

January-July 2025 - All class times are CET (Rome)

Week	Time (CET)	Monday	Tuesday	Wednesday
1	5pm - 6pm		Book Lab A	
1	6pm - 7pm	Conversation Class Extra	Book Lab B	C1 Advanced
1	7pm-8pm	Conversation Class Extra	Book Lab C	B2 Upper intermediate
2	6pm - 7pm	Proficiency Class A	Proficiency Class C	C1 Advanced
2	7pm-8pm	Proficiency Class B	Proficiency Class D	B2 Upper intermediate
3	5pm - 6pm		Book Lab A	
3	6pm - 7pm		Book Lab B	C1 Advanced Grammar Lab
3	7pm-8pm		Book Lab C	B2 Upper intermediate
4	6pm - 7pm	Conversation Class A	Conversation Class C	C1 Advanced
4	7pm-8pm	Conversation Class B	Conversation Class D	B2 Upper intermediate

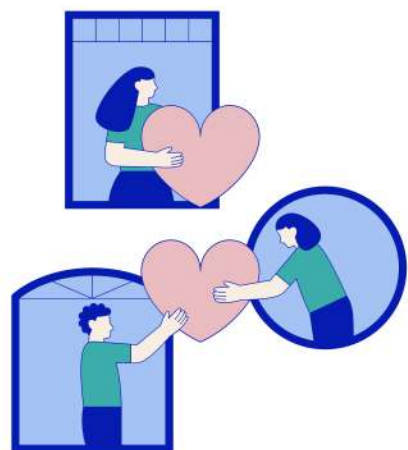
## Lesson times

View the class schedule to see when sessions are held. All times are listed in CET (Rome time). Not sure about your timezone? [Click here](#) to check.

There are no lessons in August.

## Exclusive Member Discounts

As a valued member, you'll enjoy special savings on other EDA courses. With a 3-month subscription, you get 20% off, and with an annual subscription, you'll save 30% on all [Book Lab](#) courses and [on-demand courses](#).



## Membership terms

### Subscription Access

- A 3-month subscription grants you access to the Service for 90 days. If a payment is missed, your access will be paused until the payment is resolved.
- An annual subscription provides 365 days of access.

### Cancellations & Renewals

- You can cancel the automatic renewal of your subscription at any time. Your access to the Service will continue until the end of the current subscription term.
- Aside from the 30-day money-back guarantee, no partial refunds are given for early cancellation of subscriptions.
- Once you cancel, you'll retain access to the Service, including content and resources, until your current membership period ends.

### Refund Policy

- 30-Day Money-Back Guarantee: If you're not satisfied with the Service during your first month of membership, you may request a refund within 30 days. Refunds will cover any unused months but exclude lessons already taken. To request a refund, please email us at [info@englishdigitalacademy.com](mailto:info@englishdigitalacademy.com).
- The 30-day refund applies only to your first subscription and cannot be used more than once.

If you have any questions, feel free to contact us at [info@englishdigitalacademy.com](mailto:info@englishdigitalacademy.com)!

[Click here](#) to read the full terms and conditions.



[Join Proficiency Programme today!](#)

eda

ENGLISH DIGITAL ACADEMY

Website: [www.englishdigitalacademy.com](http://www.englishdigitalacademy.com)

Contact: [info@englishdigitalacademy.com](mailto:info@englishdigitalacademy.com)