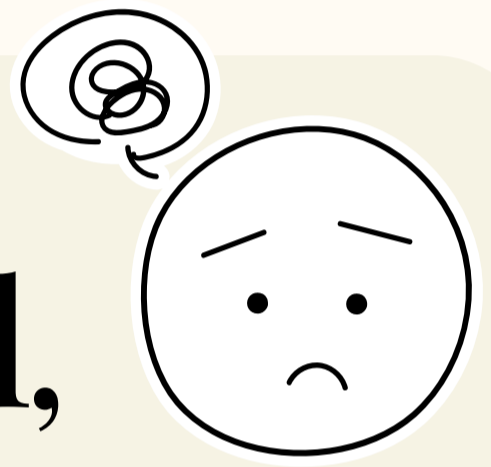


common mistakes
Quick Fixes

If you're not careful,
that solution can have
a very massive cost ...



the mistake:

very massive cost



Why is this a mistake?

Because 'massive' is an
absolute adjective

**ABSOLUTE
ADJECTIVES**

**Absolute adjectives
express a definitive,
non-gradable state or
condition, meaning they
typically do not have
varying degrees.**





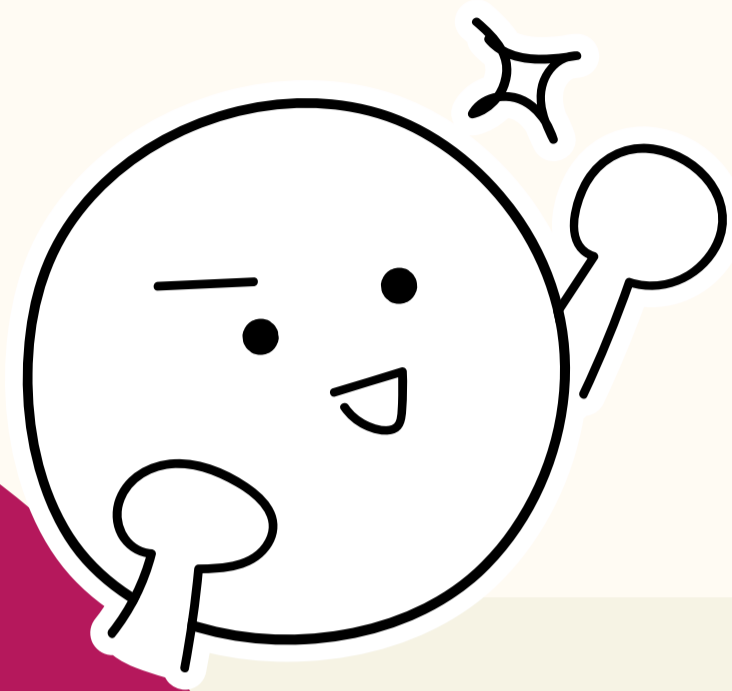
These adjectives already express an absolute state.

Adding "very" or other modifiers that imply degrees would be logically inconsistent.

For example:

Saying "very massive" is redundant because massive, by definition, is an ultimate state that cannot be exceeded or intensified.

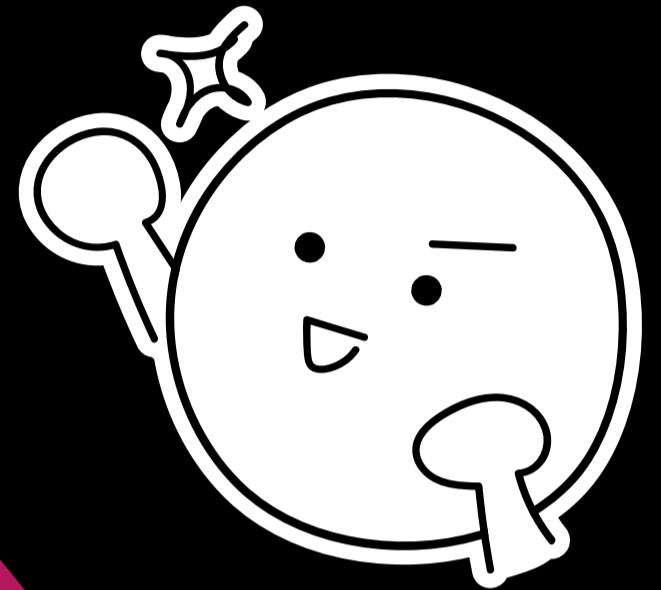




What about
POWERFUL
adjectives?!



To make your English
more creative, elevated,
and precise ...



**USE
POWERFUL
ADJECTIVES**





for example:

His presentation
was ~~very boring~~
tedious.



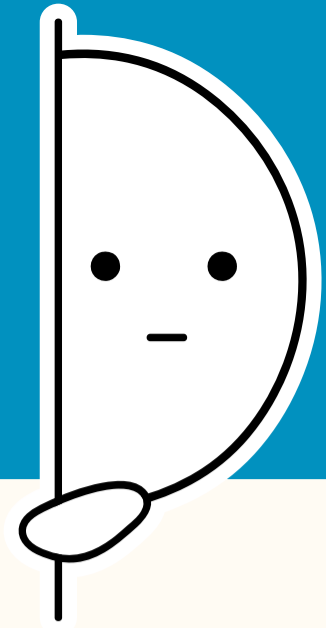
for example:

It's a
~~very competitive~~
cutthroat
environment.



for example:

Her report was
~~very detailed~~
meticulous.



Want to go deeper?

Ditch "Very": Elevate Your English with Powerful Adjectives

1. What is a powerful adjective?
2. What is an absolute adjective?
3. Can I use 'very' with powerful and absolute adjectives?
4. Why use powerful adjectives?
 - 1. Very busy - swamped
 - 2. Very poor - destitute
 - 3. Very painful- excruciating
 - 4. Very noisy- deafening
 - 5. Very damaging/upsetting = devastating
5. Conclusion
6. Activate

Find it on the blog 

FOLLOW ME

for more common
mistakes and quick
fixes



love Kerin

Kerin Goodall

www.linkedin.com/company/english-digital-academy/